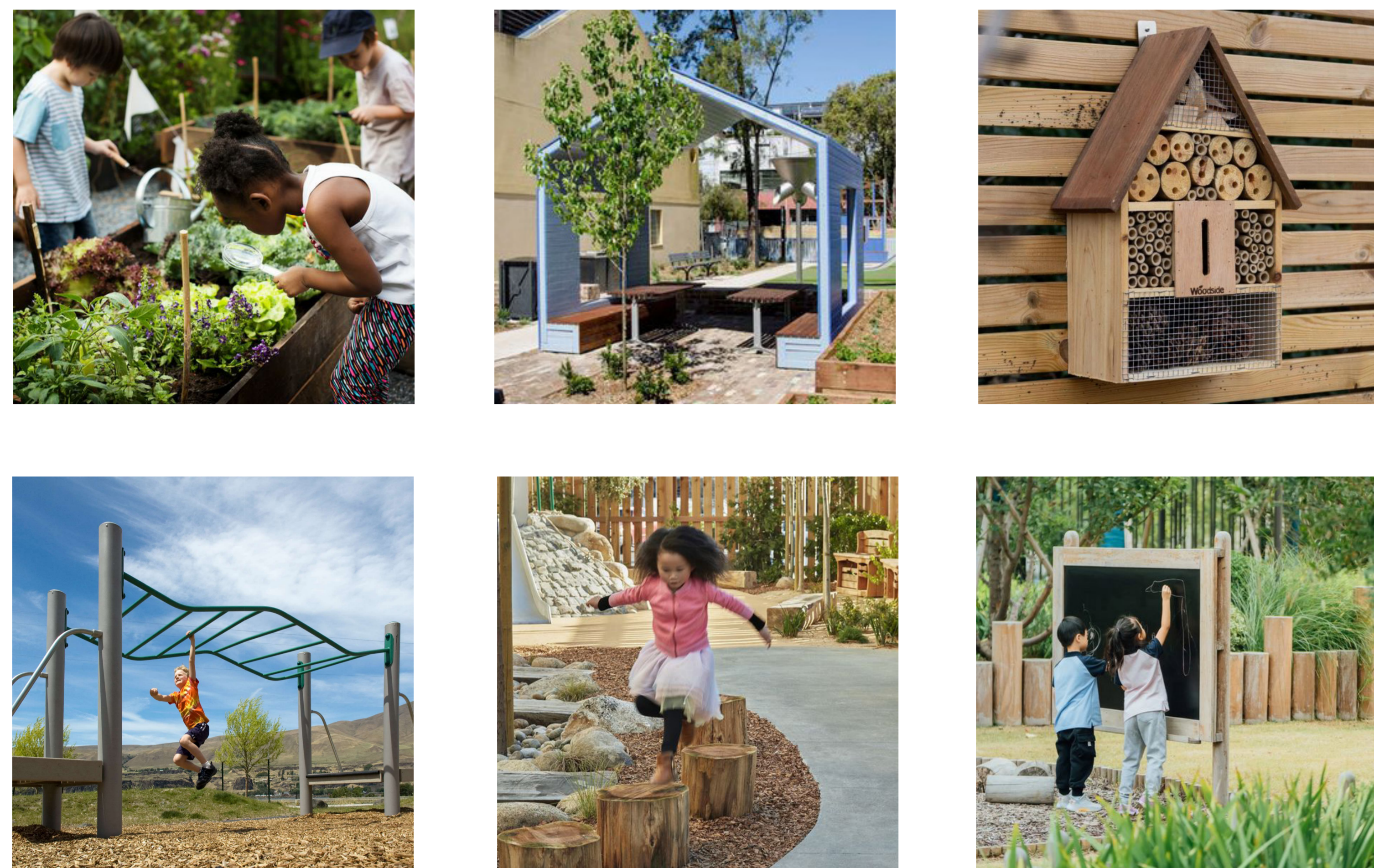


# West Bridgford Junior School - Playground Project

Our playground area, although large, lacks opportunities for children to play creatively. Our space also currently has limited shaded areas and no green space; this is something we would love to change. We believe our outdoor space should be welcoming and a place away from the classroom where children can play creatively and collaboratively. We firmly believe that if we can successfully deliver this project, it will have a highly positive impact on our children's wellbeing for many years to come. This exciting project can only happen with the financial support of our wider community.



Under the umbrella of the three principles: Grow, Play, and Learn, Design Haus has sought to create a range of spaces in which all children can engage in a variety of activities. These areas knit together those who seek more energetic play amongst those who seek quieter activities, whilst blending with the current everyday functions of the school playground. This includes designated garden spaces for planting and growing which provide children with an alternative learning environment, a greater understanding of healthy food, and values of sustainable practice. This will also provide much-needed bio-diversity to their daily surroundings. An auditorium will provide a space to gather outside beneath a shaded canopy, championing outdoor learning and peer engagement. Across each element, solar shading and covered canopies ensure the use of the playground all year round.

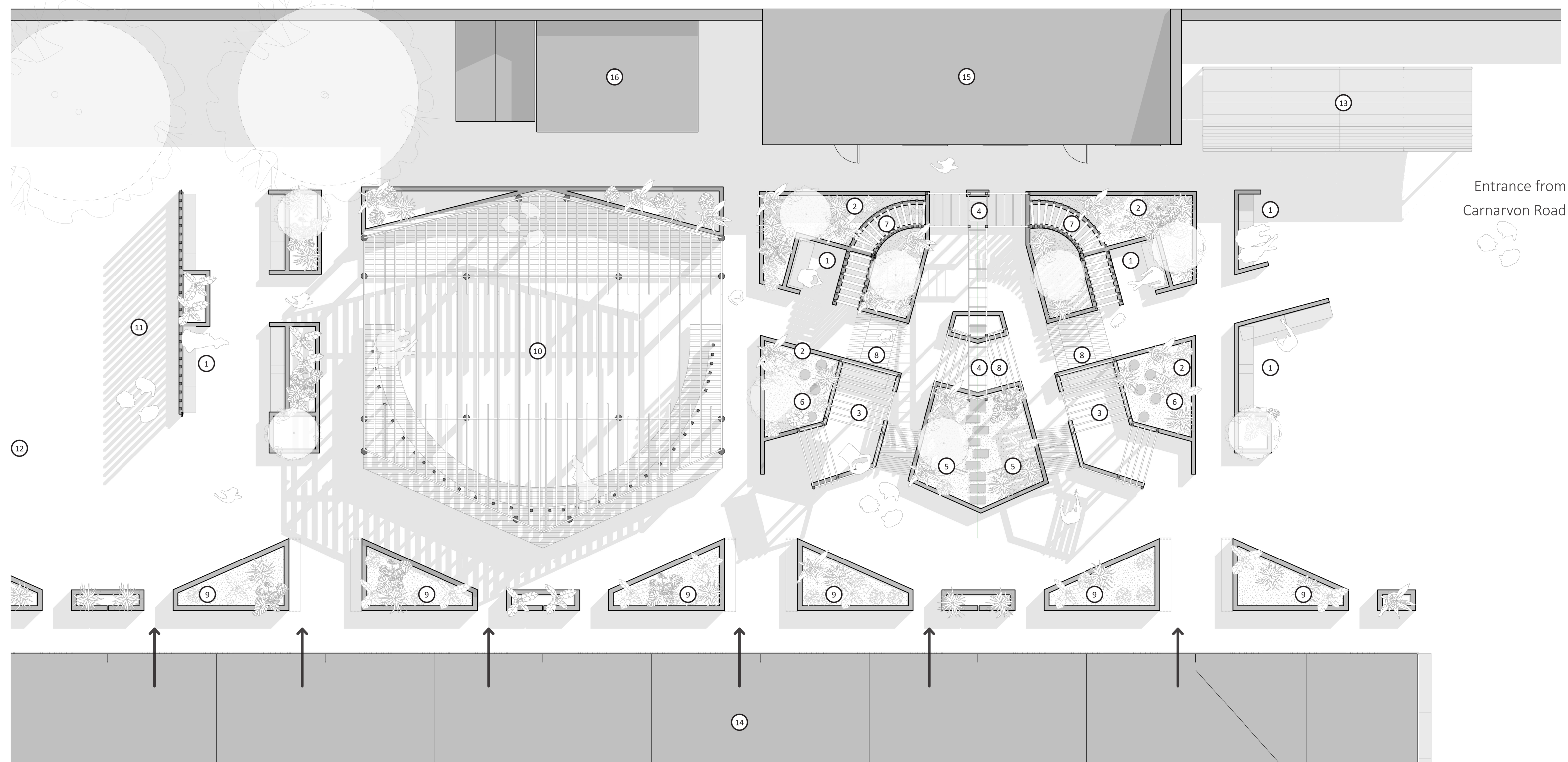


Aerial view of proposed play area

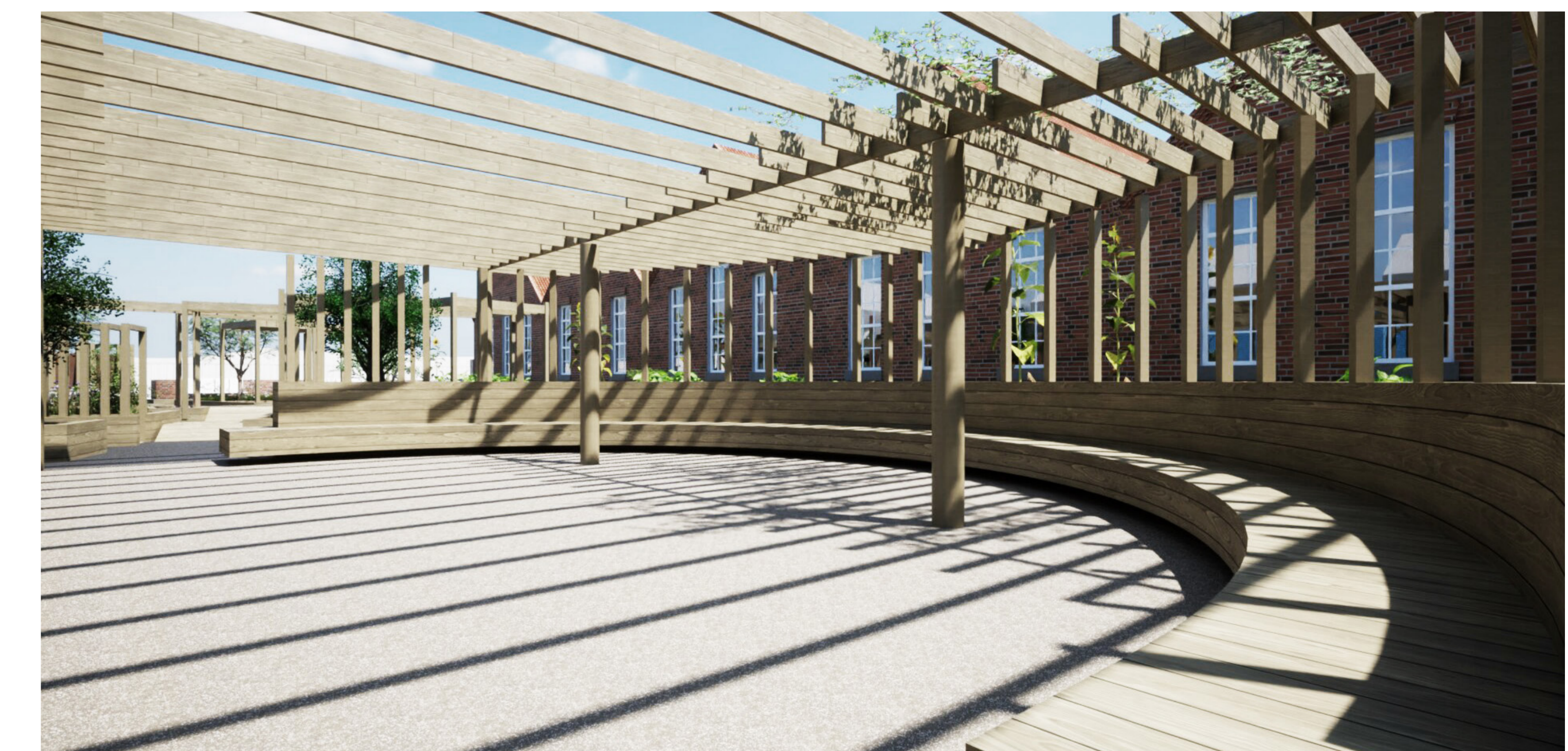
We would welcome both small and large donations from individuals or from businesses and these may be financial or the materials that will be required for the project.

When sponsored by businesses, we will endeavour to promote them in school and through our wider community, utilising our connections in local media. For more information or to make a donation, please visit our dedicated webpage on the school website ([www.wbjs.com](http://www.wbjs.com)) or contact [beth.arnold@westbridgford-jun.notts.sch.uk](mailto:beth.arnold@westbridgford-jun.notts.sch.uk)

As a close neighbour and part of the West Bridgford community, Design Haus has been engaging with West Bridgford Junior School to create a visionary design proposal for the playground. The proposal intertwines three key principles: Grow, Play and Learn. Design Haus has engaged with the children and other stakeholders at the school to collect ideas for the playground. When designing the spaces, the focus was to think from a child's perspective. We hope the finished playground will be the result of close collaboration with the school and the wider community, and are excited to be working with this local project.



Quiet space integrated with play



Amphitheatre where pupils can gather for outdoor learning, assemblies and performances

- ① Space to sit and socialise
- ② Raised planting
- ③ Shaded space
- ④ Monkey bars
- ⑤ Balance bars
- ⑥ Stepping stones
- ⑦ Tunnel
- ⑧ Ramp
- ⑨ Garden
- ⑩ Amphitheatre
- ⑪ Bug hotel
- ⑫ Sports area
- ⑬ Existing exercise equipment
- ⑭ Potential doors from existing classrooms
- ⑮ Existing outdoor classroom
- ⑯ Existing store